

JOBSCOPE ERP

MANUFACTURING SOFTWARE REVIEW BY SHELDON NEEDLE



Overview

Jobscope delivers a comprehensive ERP solution for engineer-to-order (ETO) and make-to-order (MTO) manufacturers; and maintenance, repair and overhaul (MRO) businesses.

The product is strong for Make to Order aerospace manufacturers and military contractors and supports DCAA billing. Jobscope currently has about 450 installations throughout North America.

As a job-oriented solution, JOBSCOPE is built around estimating, order management, material planning, cost control and dynamic scheduling. JOBSCOPE ensures that material is in the right place at the right time and inventories stay at their optimum levels. A complete financial package is included that is fully integrated with all production functions within the system. Engineering and manufacturing group communications are enhanced to ensure every specification is met. Full material tracking is provided even when resource shifting occurs to meet deadlines.

User Experience

With DataCap, employees on the plant floor are able to easily enter data through bar code scanning into handheld devices or PC's. Those performing field services such as equipment delivery, installation or maintenance, enter data via a standard web browser which connects securely to DataCap. Once time calculations are performed for work on jobs and supervisors approve charges, the data is verified online, organized and uploaded to JOBSCOPE.

KPI Dashboard provides instant views of key performance areas are presented in visually informative dashboard graphics. Real-time

snapshots of operational, business and department-level performance enable management and supervisor-level personnel to quickly see progress toward production and operational goals.

Pros

- Full integration of all software modules with comprehensive on-line information update/access capability
- Flexible, priority-based production scheduling for finite or infinite capacity
- On-line, real-time job cost reporting
- Full pegging of material/labor to work orders, line items, jobs and contracts
- Real-time job budgeting and actual cost collection using user-defined cost categories
- Procurement of materials directly to a job, bypassing inventory
- “On the fly” creation of purchase orders and shop orders without predefined part numbers or bills-of material
- Instantaneous visibility into the operational and financial status of every job, work order and operation
- Fully integrated bar code driven data collection system
- Access to current and historic product design, engineering and manufacturing data
- Tracking real time job costs

Cons

- Tech support is usually limited to email, can be difficult to get phone support. Online PDF files for support are



ponderous to read.

- Very thin training staff
- Some users have complained about inaccurate project costing
- Small company with few enhancements over the past few years
- Product has its roots in 1960's mainframe technology

Ease of Deployment & Training

Jobscope's specialists and instructors provide the necessary resources and guidance for successful, effective implementations. This includes knowledge transfer to enable customers to properly interpret system data and use that information to make critical operational decisions that influence productivity improvements.

First line support personnel are available to address any system issues that may arise in JOBSCOPE. Personal service delivers real world help quickly and efficiently. Resources are also available for special needs related to weekends and after-hours assistance.

JOBSCOPE controls costs by improving external communications with customers and internal communications between management, operations and finance. Real-time status reports provide information on each job, from the design of the product to shipment and delivery. By quickly locating all work orders and materials requirements, decisions can easily be made to adjust job priorities and reschedule work.

Tracking actual costs to date and comparing them to budget projections protects cost over runs and unpleasant surprises. Bottlenecks, shortages and downtime can be anticipated enabling management to transfer resources accordingly. JOBSCOPE is

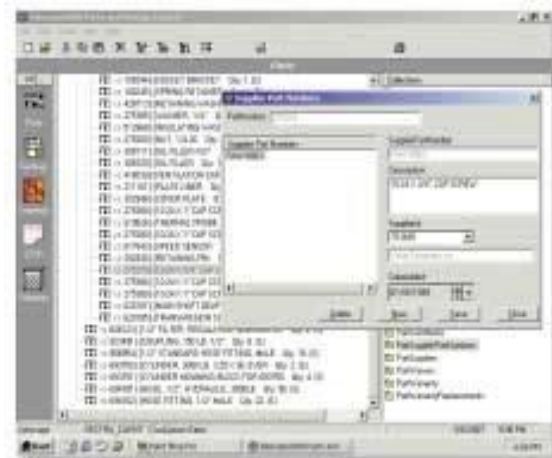
designed to be used at multiple locations, yet offers the advantage of a centralized database..

As a job-oriented solution, JOBSCOPE is built around estimating, order management, material planning, cost control and dynamic scheduling. JOBSCOPE ensures that material is in the right place at the right time and inventories stay at their optimum levels. A complete financial package is included that is fully integrated with all production functions within the system Engineering and manufacturing group communications are enhanced to ensure every specification is met. Full material tracking is provided even when resource shifting occurs to meet deadlines.

JOBSCOPE provides the ability to monitor job costs for profitability every step of the way. Managerial operations are improved and a realistic view of production is provided.

Engineering

The tools JOBSCOPE offers to engineers are flexible allowing a quick creation of custom material as needed. The engineering department can also create routings and bills of material with the CAD integrated system.

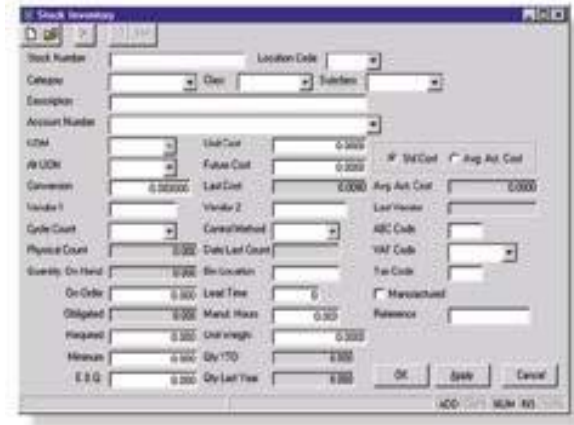


Financials

JOBSCOPE includes a fully functional suite of financial products to track costs, monitor accounts receivable and check customer credit histories. Due to the system's comprehensive link with the order entry and purchasing systems, it performs these tasks without extensive data entry by the user.

Material Control

A true just-in-time materials management system, JOBSCOPE's material control function will help maximize material availability, while reducing the amount of capital required to maintain raw material and stock inventories at their optimum levels.

A screenshot of a software window titled "Stock Inventory". The window contains a grid of data entry fields. The fields are organized into several sections: "Stock Number" and "Location Code" at the top; "Category" and "Description" below; "Account Number" and "KTM" below that; "W/LOCN" and "Conversion" below; "Vendor 1" and "Cycle Count" below; "Physical Count" and "Quantity On Hand" below; "On Order" and "On Hand" below; "Required" and "Minimum" below; and "S.S.G." at the bottom left. There are also fields for "Unit Cost", "Total Cost", "Last Cost", "Avg. Act. Cost", "Unit Weight", and "Qty. Lst Time". The window has a standard Windows-style title bar and buttons for "OK", "Print", and "Cancel" at the bottom right.

Production

Because production requirements and schedules often fluctuate, JOBSCOPE's Job Management and Control system allows for the flexibility to respond when changes occur. The fully-integrated system can also alert other departments of the situation and allows for dynamic scheduling.

Job Costing

JOBSCOPE is ideal for the project oriented environment allowing real-time cost comparisons

and adjustments for labor and materials. The system compares the job estimate to the updated job cost and visually provides performance reporting.

Automated Data Collection

JOBSCOPE's web-based data collection system, DataCap, provides accurate distribution of labor charges online for labor collection and time and attendance tracking. With DataCap, employees on the plant floor are able to easily enter data through bar code scanning into handheld devices or PC's. Those performing field services such as equipment delivery, installation or maintenance, enter data via a standard web browser which connects securely to DataCap. Once time calculations are performed for work on jobs and supervisors approve charges, the data is verified online, organized and uploaded to JOBSCOPE.

KPI Dashboard

Instant views of key performance areas are presented in visually informative dashboard graphics. Real-time snapshots of operational, business and department-level performance enable management and supervisor-level personnel to quickly see progress toward production and operational goals. JOBSCOPE offers KPI's for several business and financial areas related to shipments, sales, receivables, work centers, inventory and labor.

Engineer-to-Order / Make-to-Order Manufacturers

JOBSCOPE is able to manipulate the critical factors of specific jobs because of its ability to manage detailed material and labor cost information.

As a result, orders can be studied and managed both individually and collectively enabling JOBSCOPE to:

- Segment the entire production schedule for more effective material and production control
- Expedite or rearrange workloads for each work center, as well as reschedule individual customer orders easily and quickly
- Facilitate accurate estimates and enhanced communications between engineering and manufacturing groups

- Stay abreast of all job completion dates, allowing selective bidding on upcoming contracts
- Easily adapt to differing severities of repairs for varying teardown and reassembly requirements

Jobscope's specialists and instructors provide the necessary resources and guidance for successful, effective implementations. This includes knowledge transfer to enable customers to properly interpret system data and use that information to make critical operational decisions that influence productivity improvements.

First line support personnel are available to address any system issues that may arise in JOBSCOPE.. Resources are also available for special needs related to weekends and after-hours assistance.

Metals Processors and Fabricators

JOBSCOPE enables metals processors and fabricators to:

- Track and price scrap materials
- Optimize scheduling system
- Use standard costing as opposed to true job costing, if desired
- Factor in special order-entry requirements
- Keep track of lot inventory
- Ship items in unconventional ways
- Repair/Refurbishment Contractors

JOBSCOPE is specially designed to handle subcontract work and special charges for unplanned material and labor requests - two major factors in the repair/refurbishment environment.

The flexibility of JOBSCOPE allows repair/refurbishment contractors to:

- Monitor costs vertically, by department, or horizontally by individual service orders
- Evaluate the performance and cost efficiency of their employees and subcontractors on a job-by-job basis
- Define work and material, without being limited by the Bill of Material

About Sheldon Needle



A former CFO, consultant and software designer, Sheldon Needle has authored or co-authored more than 20 books on software selection and has contributed articles to major publications, including the Journal of Accountancy and Nation's Business. CTSGuides.com has the distinction of being the very first company to do hands-on, independent evaluations of software for the middle market.

Sheldon speaks with business owners and managers every day about software selection and makes personalized recommendations based on their needs and budget. He is widely known and respected throughout the business software community for his independence, integrity and expertise.

As part of registering for our free software selection kit, you receive a 15-minute consult with Sheldon. Sheldon understands financial and business issues and speaks your language.

He knows the leading software companies—how they compare, their strengths and weaknesses, where they fit into the market and which ones would be suitable for your business.